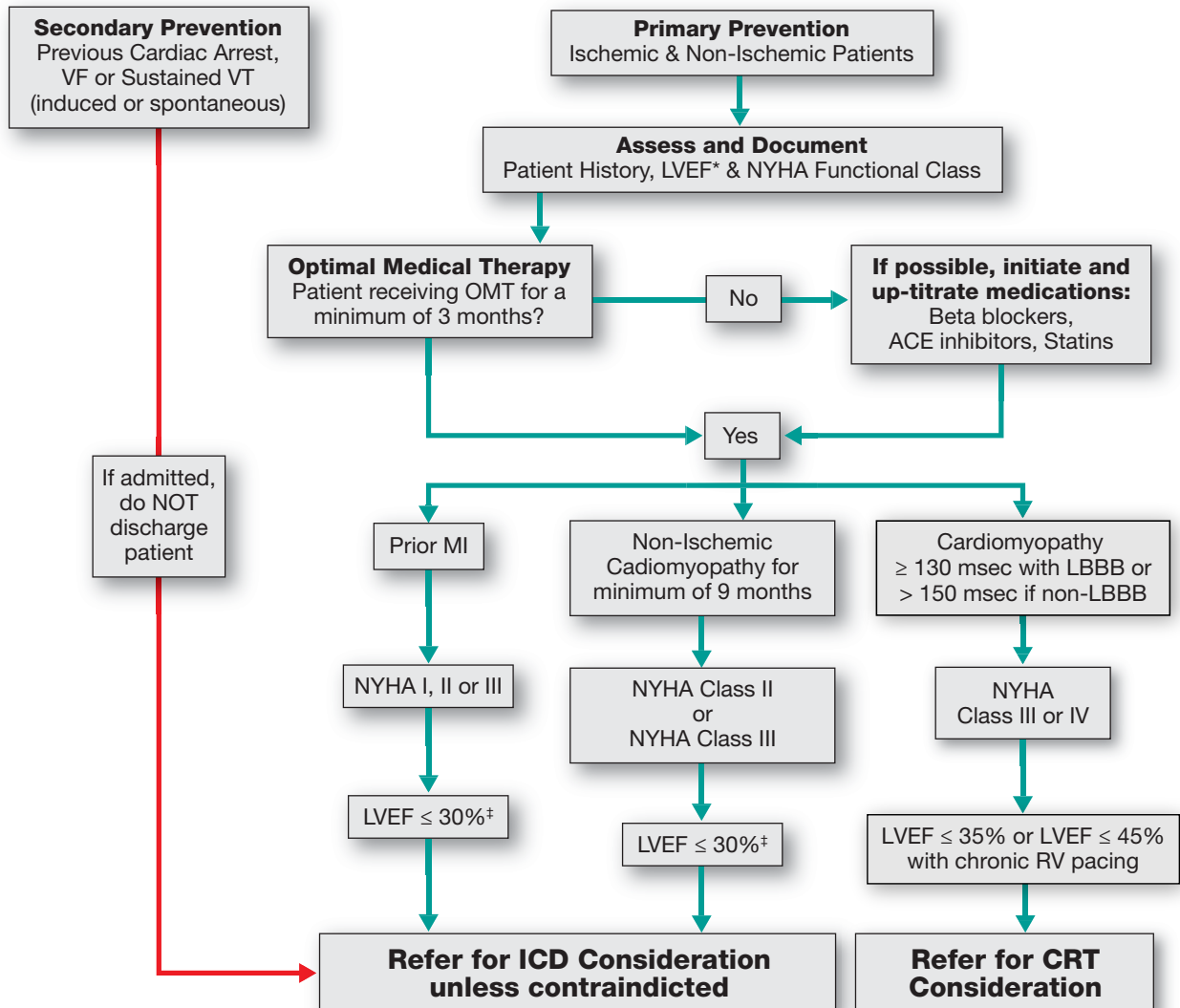




Referral Guidelines for ICD/CRT Therapy Consideration

This is a general algorithm to assist in the referral of patients. This clinical tool is not intended to replace individual medical judgement or individual patient needs. Refer to the manufacturers' prescribing information and/or instructions for use for the indications, contraindications, warnings, and precautions associated with the medications and devices reference in these materials.



* LVEF measured 30 days post MI or 90 days post revascularization procedure.
‡ Ejection fractions of 31% to 35% will also be considered for appropriate patients.

References

- ¹ Patients with secondary indications for device therapy should undergo evaluation and device placement prior to hospital discharge.
- ² Please see individual medication and device algorithms for details.
- ³ 3-6 months of optimal medical therapy is suggested before reassessment of LVEF and functional status.

Reference Source

- JMO Arnold, P Liu, C Demers et al. Canadian Cardiovascular Society consensus conference recommendations on heart failure 2006 : Diagnosis and management. Can J Cardiol 2006; 22(1):23-45.
- Tang AS, et al. Canadian Cardiovascular Society/Canadian Heart Rhythm Society position paper on implantable cardioverter defibrillator use in Canada. Can J Cardiol 2005;21(Suppl A): 11A-18A.

